

About Us

Y A A L

We introduce ourselves Ms/. Yaal Enterprises Private Limited is one of the leading manufacturer and supplier of casting items (Ferrous metals like Manganese, HCHCR - High Chrome, Grey / SG Cast irons, WCB etc) to various Industrial sectors like steel plants, Cement plant, Sugar plant, power plant, Mining industry, Textile industry etc., as per their Requirement & also catering to small & medium scale industries.

We also have the requisite state of the art machineries like, highly sophisticated induction furnaces, Shot Blasting machine, Heat Treatment Furnace and laboratory Equipments, Which facilitates in achieving quality products to fulfill the specific requirement of the customers.

M/s. YEPL have a team of young and dynamic work force, as well as the top professionals from steel plants with rich metallurgical background and vertical knowledge of each step of Production, Process, Quality and R&D. A highly qualified people that is in pursuance of excellence and committed to maintain international quality standards, Efficient delivery schedule, competitive pricing and total customer satisfaction, manages our company.

Quality

We are committed to customer satisfaction through on time delivery of consistent quality products and commitment to continual improvement.

Our Vision

- Zero defects in our products/services.
- Meeting 100% delivery schedule.



TESTING FACILITIES

YAAL

MECHANICAL TESTING



Hardness Testing

CHEMICAL AND METALLURGICAL TESTING



Microstructure Analysis
(Microscope)



Chemical Structure Analysis
(Spectrometer)

NON DESTRUCTIVE TESTING



Dimensional Testing



Dye Penetrant Testing



Ultrasonic Testing

PRODUCT PORTFOLIO



Hammer Head
with Hard facing



Hammer Arm



Gib Liner Plate
(Straight & Curved)



Quenching
Car Liner Plate



Horizontal bar



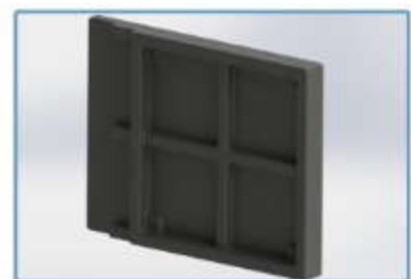
Grate Bars



Oven doors



Jaw Plate



Liner Plate